



**Federal APD, Inc.**  
42775 Nine Mile Road,  
Novi, Michigan 48375-4113  
Tel: 248-374-9600, Fax: 248-374-9610  
www.federalapd.com

### Regional Locations:

#### Region 2

Don Vennell, Regional Sales Manager  
Tel: 856/303-8888 • Fax: 856/303-2442

#### Region 4

Hank Connors, Regional Sales Manager  
\*Steve Baker, Field Service Technician  
Tel: 407/299-0731 • Fax: 407/578-1597  
\*Tel: 813/870-3273 • Fax: 813/870-3273

#### Region 5

Jim Garzella, Regional Sales Manager  
Al Dreslinski, Field Service Technician  
Tel: 248/374-9600 • Fax: 248/374-9610

#### Region 6/7

Thomas Bradfish,  
Eastern District Sales Manager  
Dave Malo, Field Service Technician  
Roy Williams, Field Service Technician  
Tel: 773/586-9001 • Fax: 773/586-8002

#### Region 8

Jack Provencher,  
Southern District Manager  
Brad Conner, Regional Sales Manager  
Richard Husby, DFW Site Manager  
\*Michael Morris, Field Service Technician  
Tel: 972/871-0214 • Fax: 972/871-0286  
\*Tel: 210/340-4533

#### Region 9/13/89

Mark Adams, Regional Sales Manager  
Tel: 714/632-0670 • Fax: 714/632-0674

#### Region 10

Mark Misencik, Regional Sales Manager  
Max Galindo, Field Service Technician  
Tel: 510/785-4046 (Sales)  
\*510-785-4047 (Service & Support)  
Fax: 510-785-4048

#### Region 16

Mike Green, Regional Sales Manager  
Ron Welling, Field Service Technician  
Tel: 314/428-1988 • Fax: 314/428-6568

#### Region 87

Demetrio Jaramillo  
International Sales Director  
Tel: 248/374-9600 • Fax: 248/374-9610

#### Region 90/96 Asia/Australia

Spencer Ka Wai Lee,  
Pacific Rim Regional Director  
Dennis Tam, Int'l Technical Manager  
Tel: 852/2671.9880 • Fax: 852/2402.1912

#### Federal APD do Brasil

Walter Santanna Zebinden,  
General Manager  
Gilberto da Silva, Sales Manager  
Tel: 55/11/5071-3320  
Fax: 55/11/5078-7845

#### Associations:



IPI-International  
Parking Institute



**FEDERAL APD**  
Federal Signal Corporation



CERTIFIED  
ISO 9001:2000



# License Plate Recognition - LPR



CERTIFIED  
ISO 9001:2000

**FEDERAL APD**  
Federal Signal Corporation

## License Plate Recognition - LPR



### *“An Image is Worth a 1,000 Words”*



License Plate  
Capture Camera



Camera Controller



Parking  
Device  
Technology  
SST Series



Parking  
Management  
Software  
Package



Control and Monitor with  
real-time image screens

10/10/2014 13:27:41

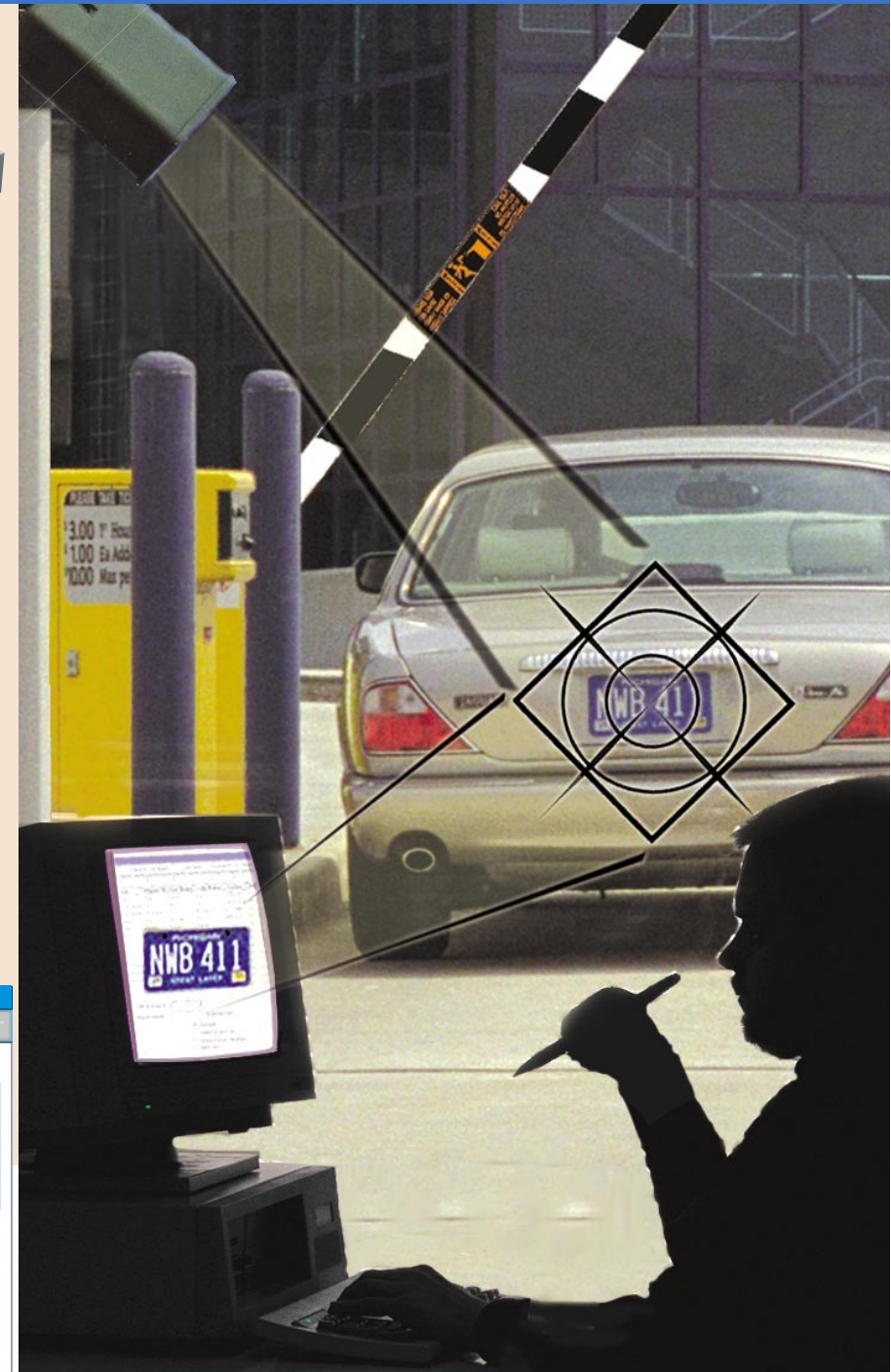
28 - Patron/Vehicle Identification

LP Captured:	TX:leo118	Enter LP
Ticket Issued:	201014	Enter ID
Fee confirmed:	\$33.00	Lost ID
Status:	Vehicle Identification Complete	

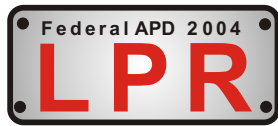
Current Transaction

Entry Transaction

LP: leo118  
State: TX  
Confidence: 90  
ID: Ticket:201014







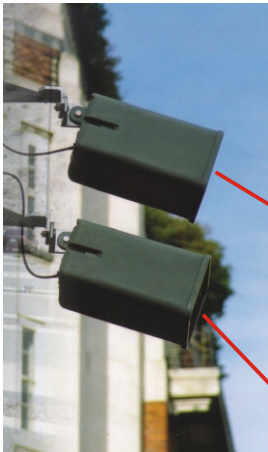
# License Plate Recognition

LPR systems have a wide range of revenue control and security applications. You can use the extracted plate number and images to create automated solutions for various applications.

## Enforcement/Access & Control Benefits for Parking Revenue Control

the plate number is used to:

- Reduce ticket fraud.
- Calculate parking time.
- Calculate fees for lost tickets.
- Control access in secured areas.
- Provide license plate data to local and federal law enforcement agencies when requested.



Domestic

OKLAHOMA  
QNH 778  
NATIVE AMERICA  
Plates



International

MAZ 8903  
Plates

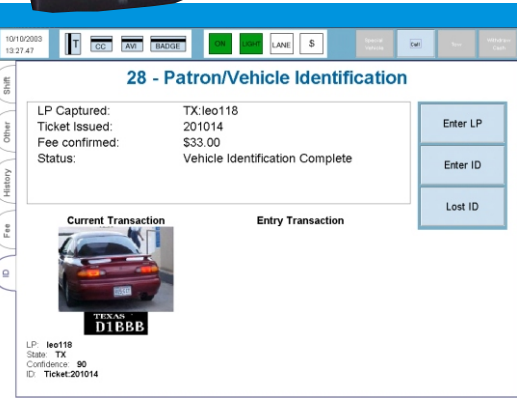
The LPR system advantage is the capturing of an image record (in real time) of the vehicle which is useful to fight ticket swapping, lost tickets and other potential fraud (“an image is worth a thousand words”).

Federal APD offers a complete range of products for LPR (License Plate Recognition). We provide rugged, compact and cost effective systems that will deliver high accuracy plate read rates for any parking application.

We offer you the LPR system that will control and monitor real-time activity for your revenue control applications.



Control and Monitor with real-time image screens



The system includes License Plate Capture Cameras and a Controller for two lane operation. The unique “plate finder” technology locates and selects the best image as a vehicle passes through the field of view. External trigger inputs are provided for each lane utilizing a controller with embedded software which allows the system to operate in environments too harsh for standard PCs.

This system when integrated into our parking control device technology and our parking management software package gives you the control to monitor activities within your parking facility. Using the SST family of parking control devices and the ScanNet® Parking Management Software you can transmit information and produce a variety of reports on all the components that make up your parking network including LPR.



# One image is worth a thousand words!

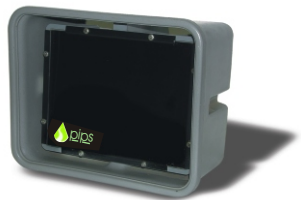
## License Plate Capture Cameras

The License Plate Capture Camera offers both image sensor (CCD) and infrared (IR) illumination in a single package. The illumination is provided by an array of LEDs which can be pulsed at varying levels allowing the camera to capture excellent plate images.

Power and communications to the camera as well as video is carried on a single cable. The camera is available in a variety of illumination options to meet each particular requirement. All versions return excellent contrast images of license plates over a wide range of weather conditions, 24-hours a day. No auxiliary illumination, cooling or auto iris lens are required.

## Multiple Camera Controller

The Multiple Camera Controller allows for quick and easy camera setup while providing power to the camera/illuminator. The Controller has an embedded optical character reader (OCR) software package for high speed digitizing of plate images. All settings can be manually set from the controller or PC. In either setup arrangement controls are provided for Level (Flash), Multiple Flash Levels, Video Gain, Shutter Speed and Cable Length Equalization.



License Plate Capture Camera



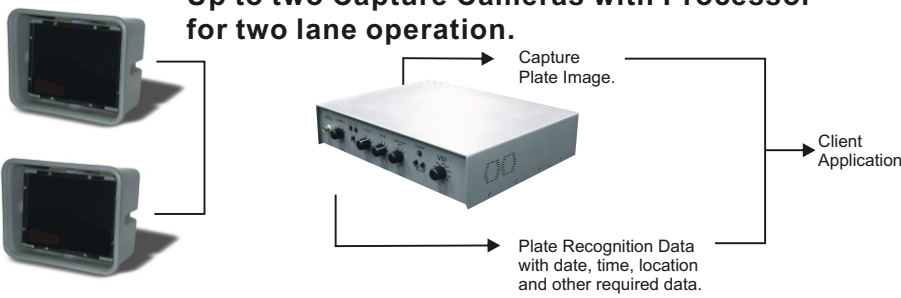
Multiple Camera Controller



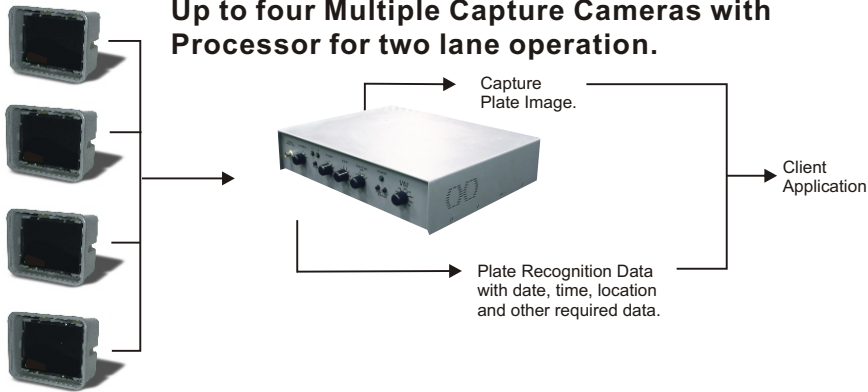
Parking Device Technology SST Series

## Complete Federal APD LPR Systems

Up to two Capture Cameras with Processor for two lane operation.



Up to four Multiple Capture Cameras with Processor for two lane operation.



Parking Management Software Package

Serving the Parking Professional for over 50 years.

